

Performance test & Burn in test	
Tested riser card	L914D -- SDx4 to SATA II Adapter
SD Card	Transcend 8GB SDHC Class 10/ TS8GSDHC10
Test Environment	
M/B	GIGABYTE GA-X58A-UD3R
CPU	Intel i7-930 , 2.8MHz/ 8G Cache/ 4.8GT
RAM	KVR1333D3N9/2G , 1333MHz,2G BYTE DIMM* 2
Power	TC START W500 , 500W ATX,12V V2.2 Power Supplier
VGA	GIGABYTE GV-R467ZL-1GI , ATI Radeon 4670
Operate System:	WIN 7 64bit OS

Install:

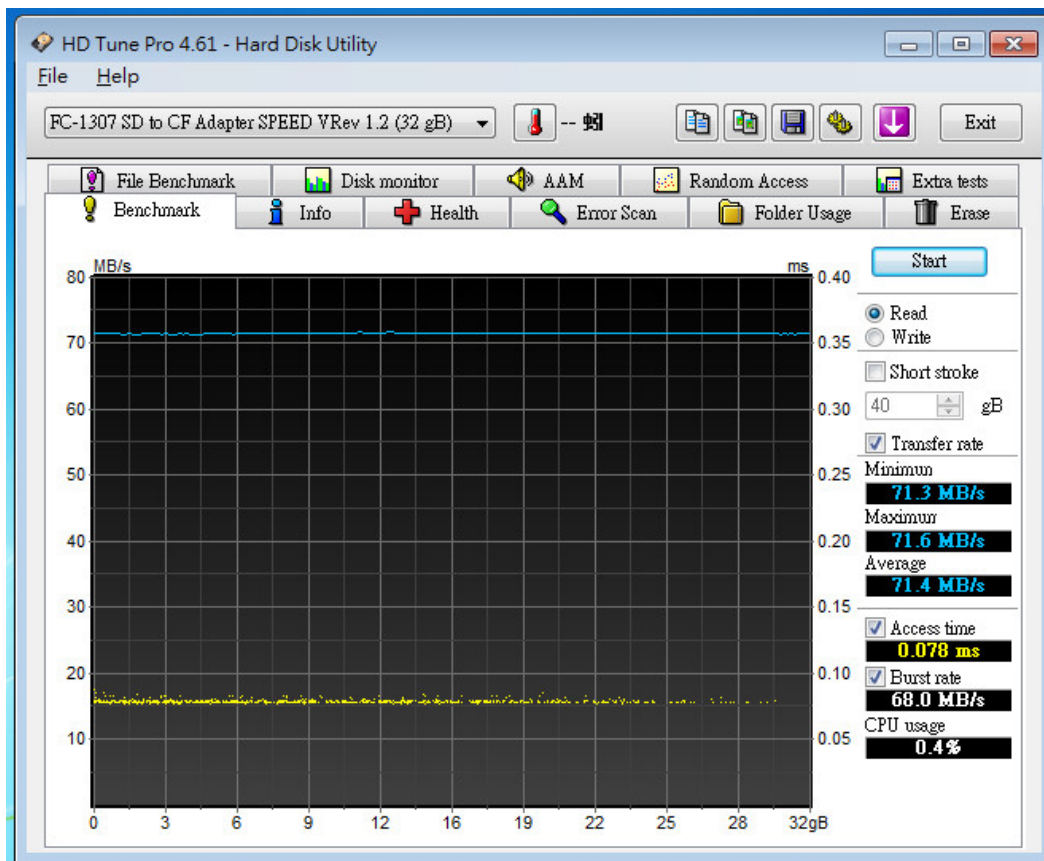
Transcend (TS8GSDHC10) SD 4pcs, Insert to L914D adapter, and then connected to the X58 chipset SATA II Ports (use the GIGABYTE [GA-X58A-UD3R](#)).

L914D, and Transcend (TS8GSDHC10) SD 4pcs assembly completed as below:

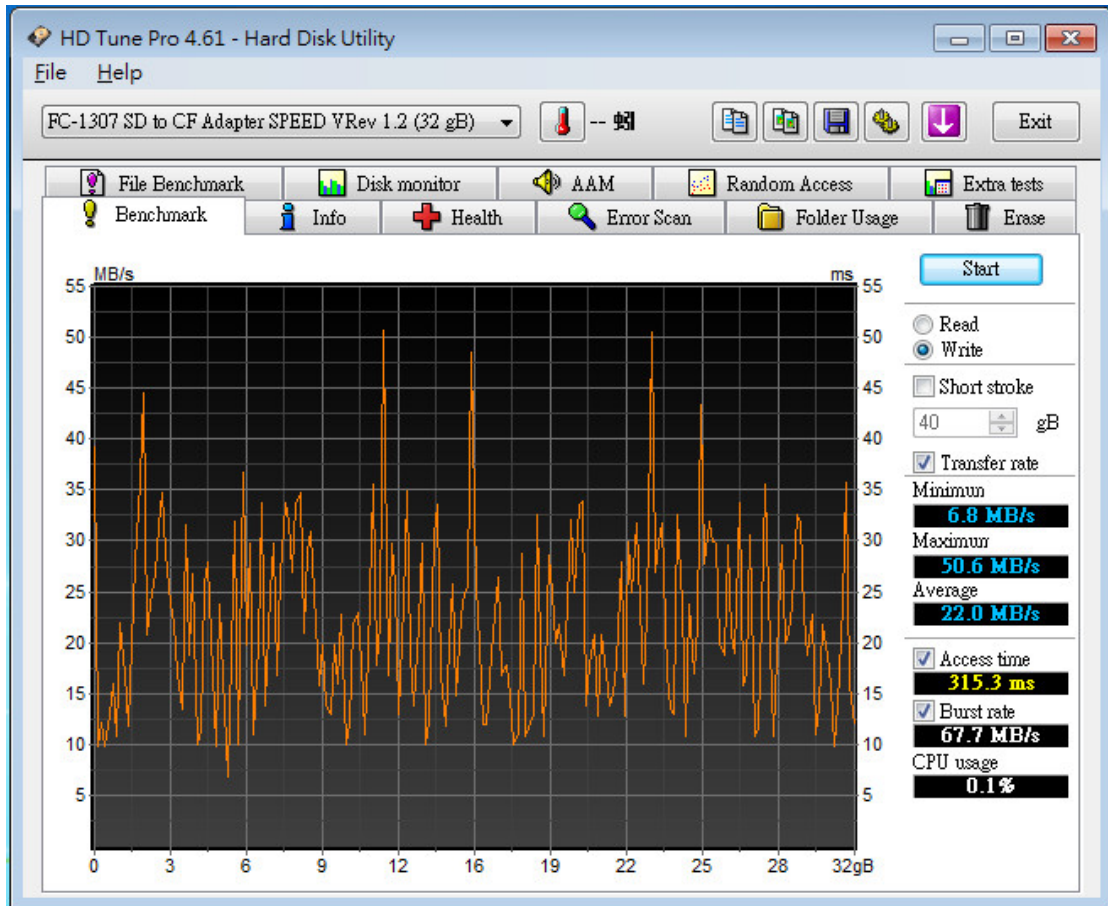


The following performance test use HD Tune pro 4.61 original software(no partition)

※Benchmark (Sequential **Read** / default block size= 64KB)

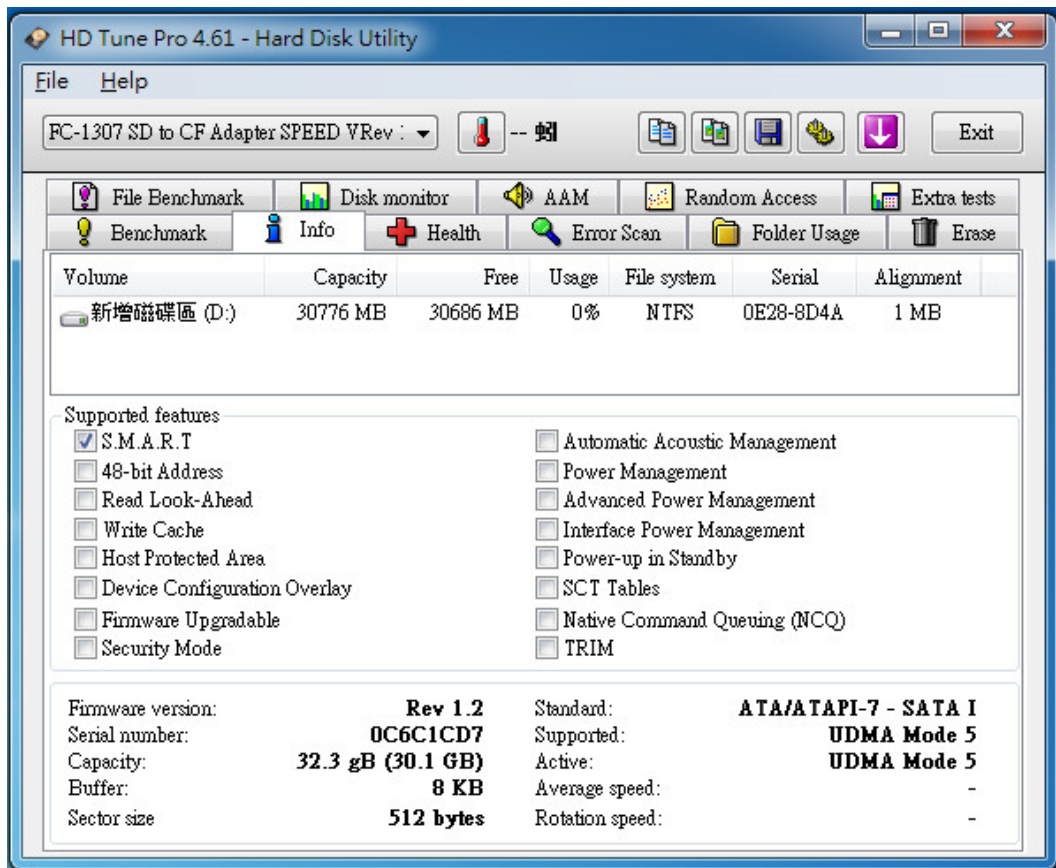


※Benchmark (Sequential **Write** / default block size= 64KB)

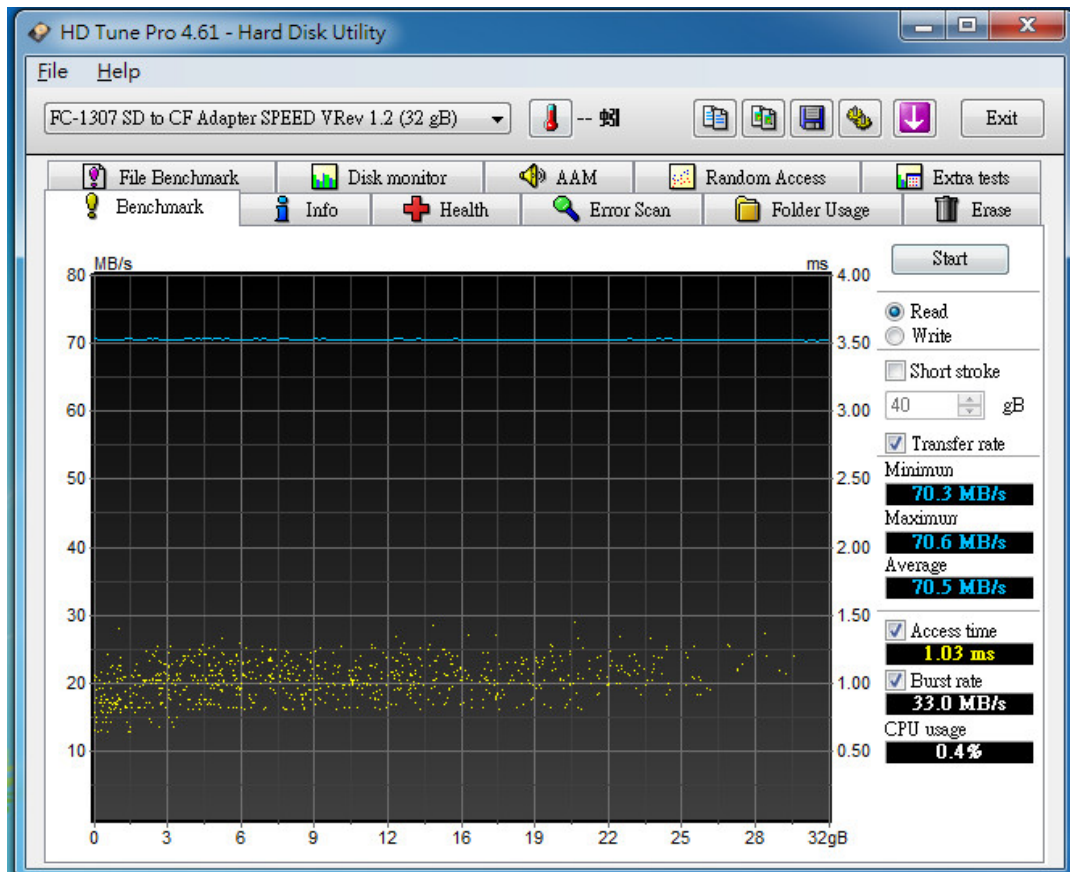


The following performance test use HD Tune pro 4.61(partition and formatted by win 7 NTFS Type)

※show SSDMAEMC080G2/ 80GB mSATA SSD **SATA Supported features**

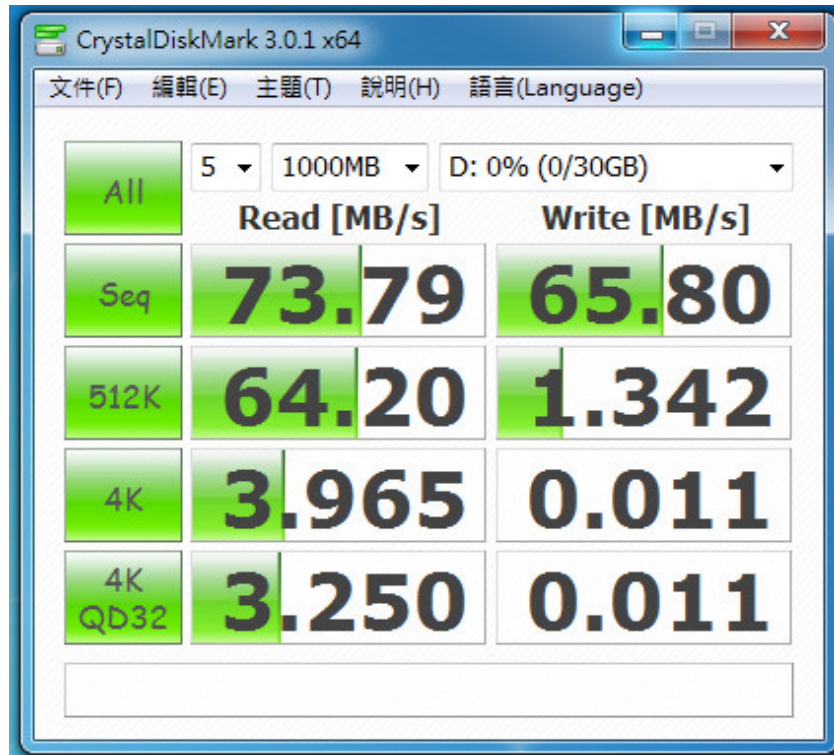


※Benchmark (Sequential **Read** / **default block size= 64KB**)



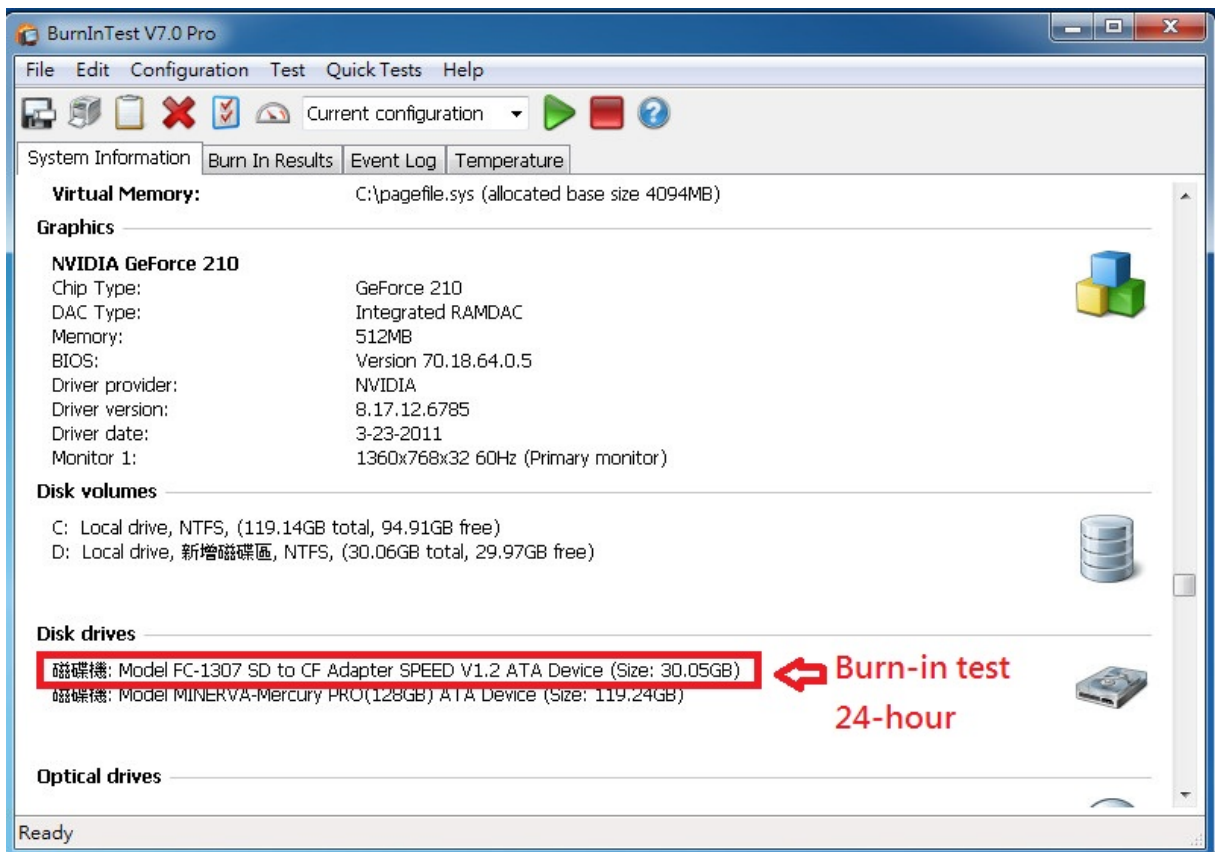
The following performance test use CrystalDiskMark 3.0.1 x64 (partition and formatted by win 7 NTFS Type)

※Benchmark (Sequential Read & Write / default block size= 1MB)

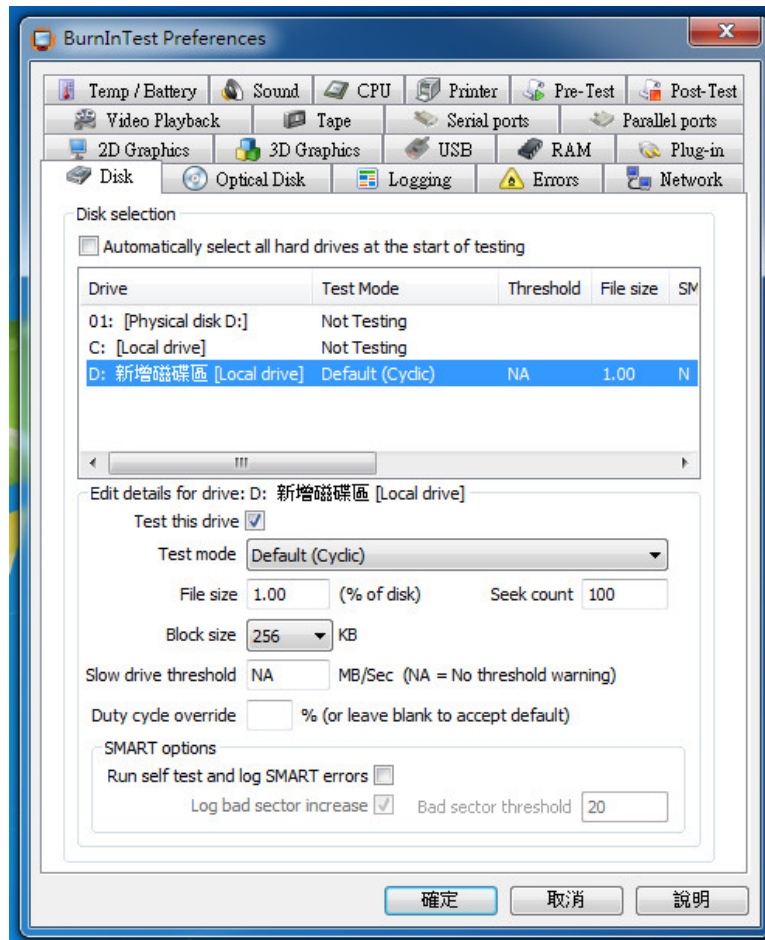


The following Burn in test use BurnInTest v7.0 Pro (partition and formatted by win 7 NTFS Type)

※ show System information



※ show Disk test mode(default cyclic -- 10 ways cycle test)



※ show Transcend (TS8GSDHC10) SD 4pcs,32GB 24-hour Burn-in test PASSED

